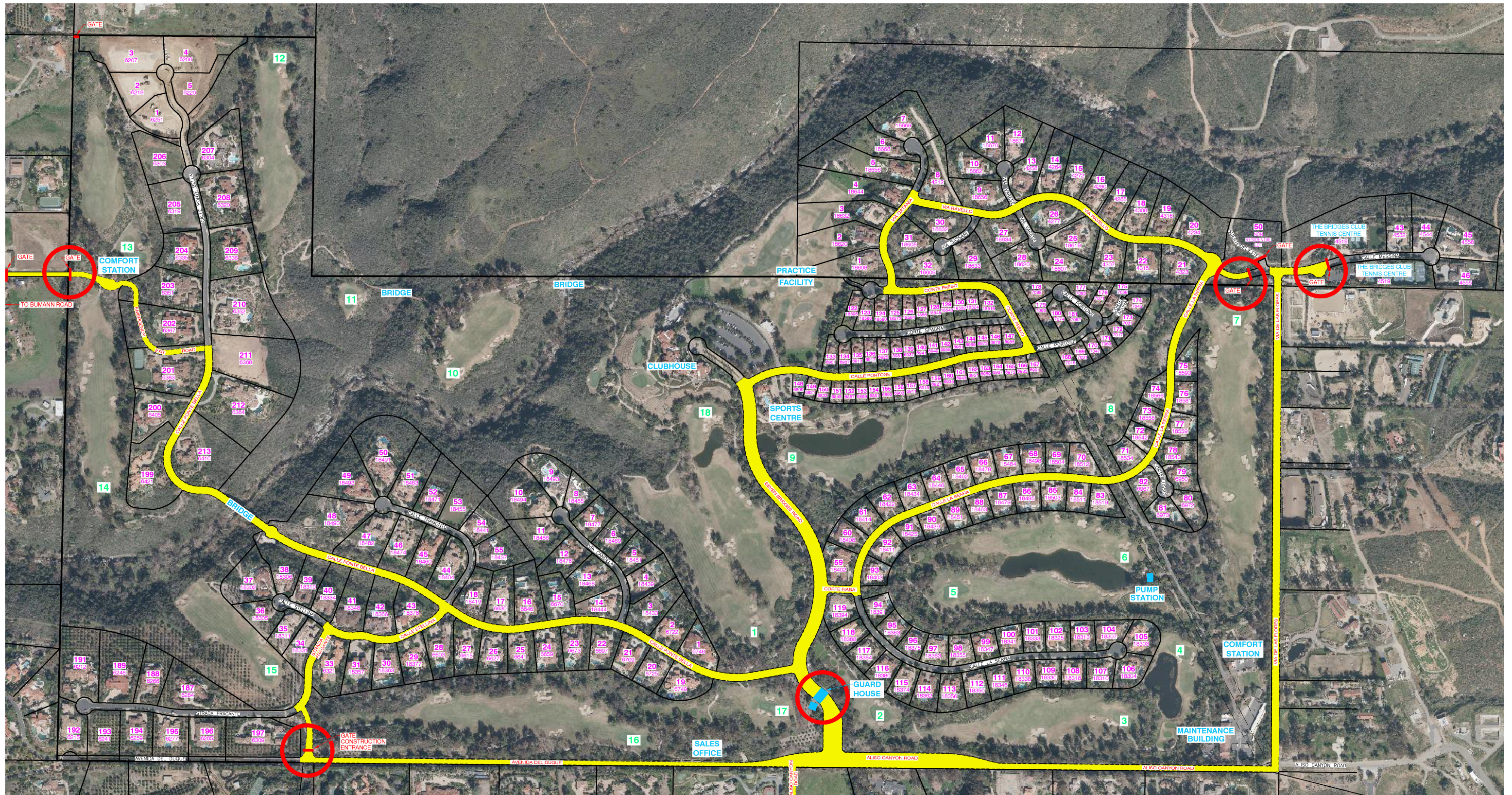






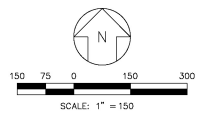


THE BRIDGES AT RANCHO SANTA FE - EVACUATION ROUTES



LEGEND

-  PROPERTY LINE
-  GATE
-  105 LOT NUMBER
-  18 HOME ADDRESS NUMBER
-  EVACUATION ROUTES
-  EVACUATION EXIT POINTS



Evacuation Route Map

Wildfire fatalities most commonly occur when people leave their home too late or are over-taken by fire. If you live in an area that's at high risk for wildfire, it's important for you to plan your evacuation route now, before an emergency situation arises.

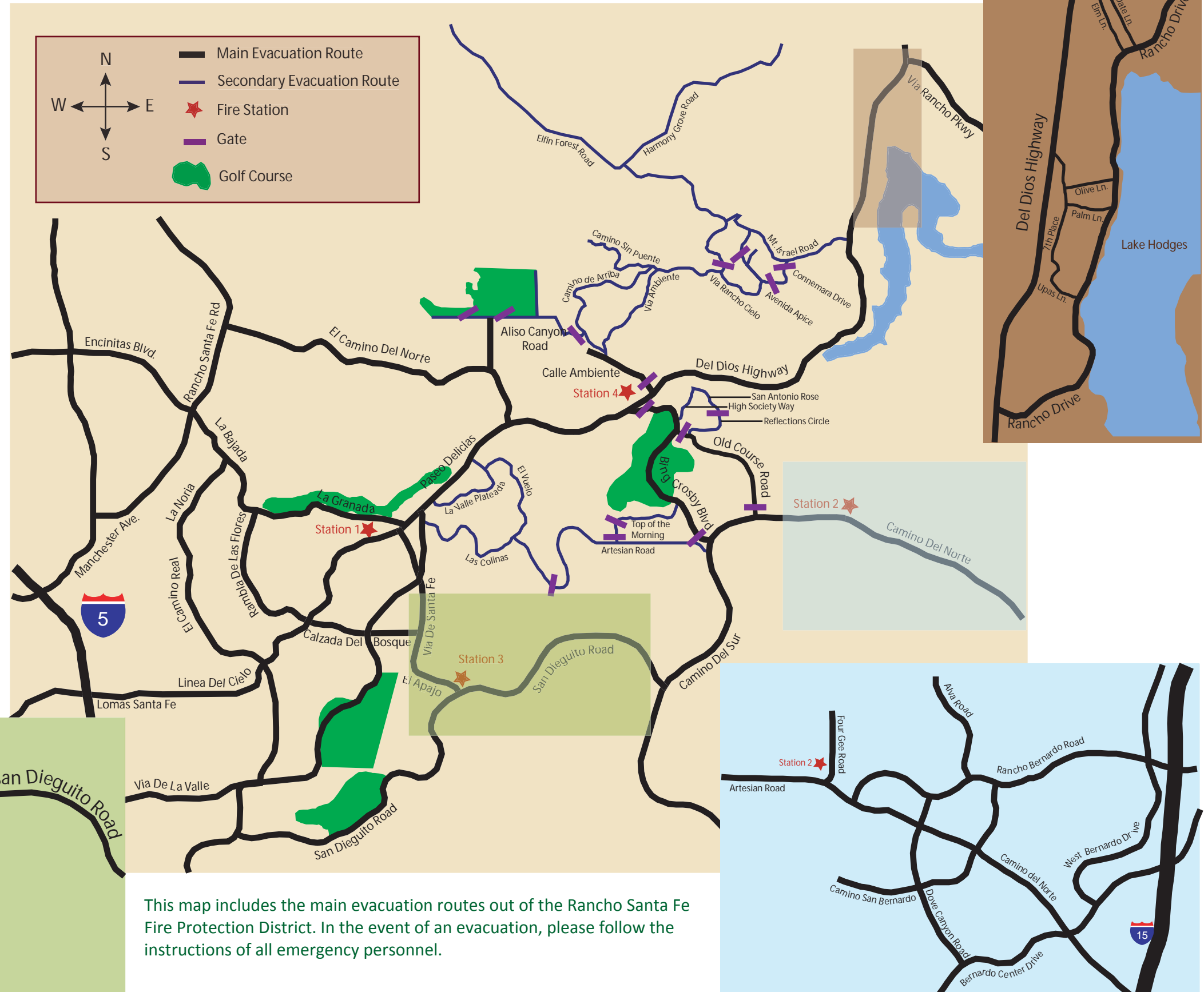
Relocate early enough to avoid being caught in fire, smoke or road congestion. Don't wait to be told by authorities to leave. In an intense wildfire, they may not have time to knock on every door. If you are advised to evacuate, don't hesitate!

"Should I stay or should I go Quiz":

- Are you physically fit to fight spot fires in and around your home for up to 10 hours or more?
- Are you and your family members mentally, physically and emotionally able to cope with the intense smoke, heat, stress and noise of a wildfire while defending your home?
- Can you protect your home while also caring for members of your family, pets, etc.?
- Do you have the necessary resources, training, and properly maintained equipment to effectively fight a fire?
- Does your home have defensible space of at least 100 feet and is it cleared of flammable materials and vegetation?
- Is your home constructed of ignition resistant materials?

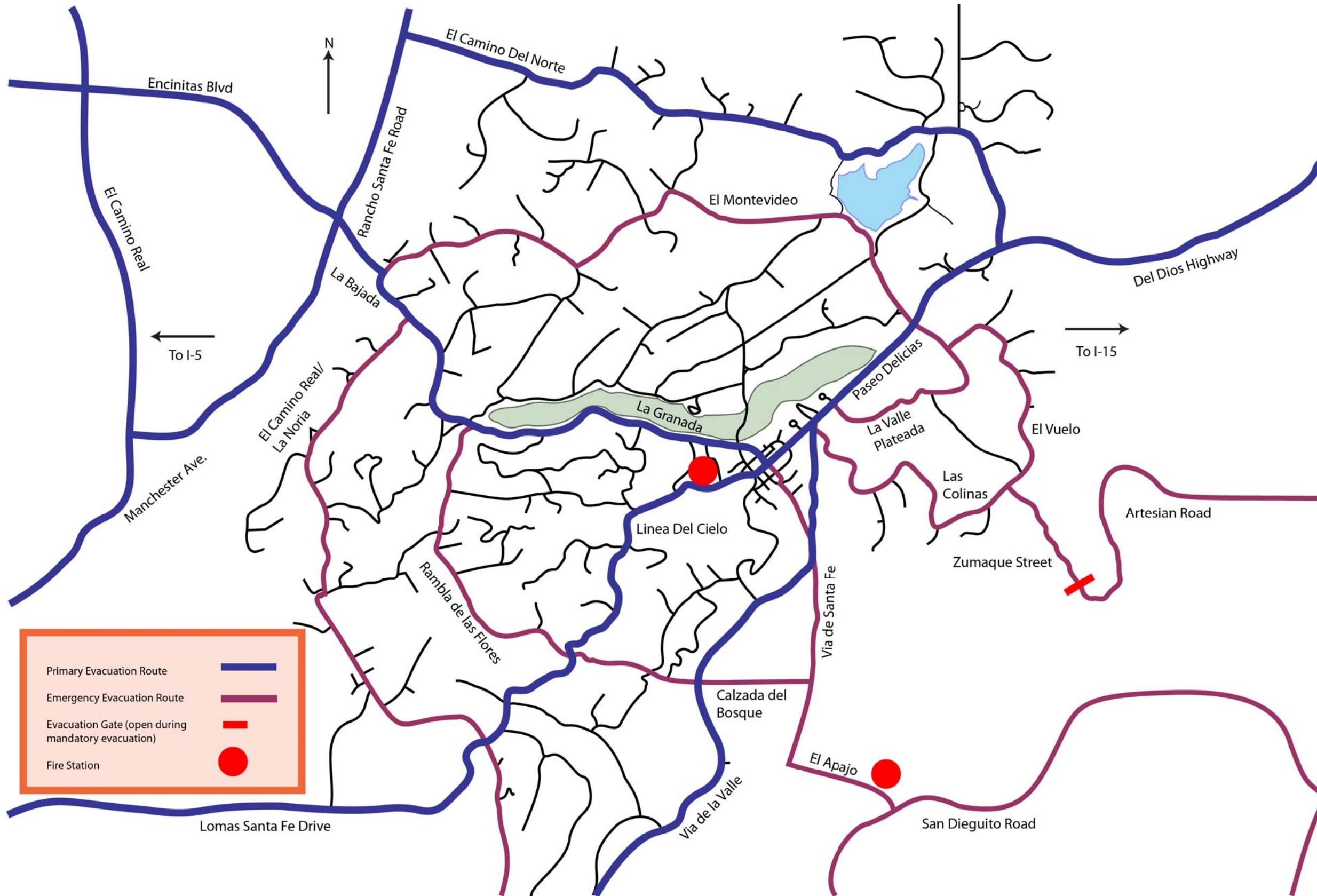
If you answered "No" to any of these questions, then plan to evacuate early.

REMEMBER: By evacuating early, you give your family the best chance of surviving a wildfire. You also help firefighters by keeping roads clear of congestion, enabling them to move more freely and do their job.



This map includes the main evacuation routes out of the Rancho Santa Fe Fire Protection District. In the event of an evacuation, please follow the instructions of all emergency personnel.

RANCHO SANTA FE EMERGENCY EVACUATION MAP



Emergency Supply Kit Items

- 3-day water supply providing one gallon of water per person, per day
- 3-day non-perishable food supply including a can opener and kitchen utensils
- One change of clothing and shoes per person
- Enough blankets and/or a sleeping bag for each person
- First aid kit, including family prescriptions and spare eyeglasses
- Emergency tools and work gloves
- A battery-powered radio or television and extra batteries
- Flashlights with extra batteries
- Matches and/or a lighter kept in a waterproof container
- Sanitation and hygiene items
- Special items for infants, seniors and those with disabilities
- A credit card and cash; personal identification; extra set of car and house keys
- Extra pet food, leash(es), and enough pet carriers to transport all pets
- Sunglasses and/or goggles (for high wind and blowing embers)
- Entertainment (e.g. books, games for the family, or child's favorite toy)
- Cell phone and charger
- Computer, hard drive, or laptop (with charger)
- Prescriptions and medications
- Important documents, including birth certificates, passports, and insurance records
- Jewelry
- Additional items: